



GAT MONTHLY MEMBERSHIP PROGRESS REPORT

Results as of: 8/31/2023

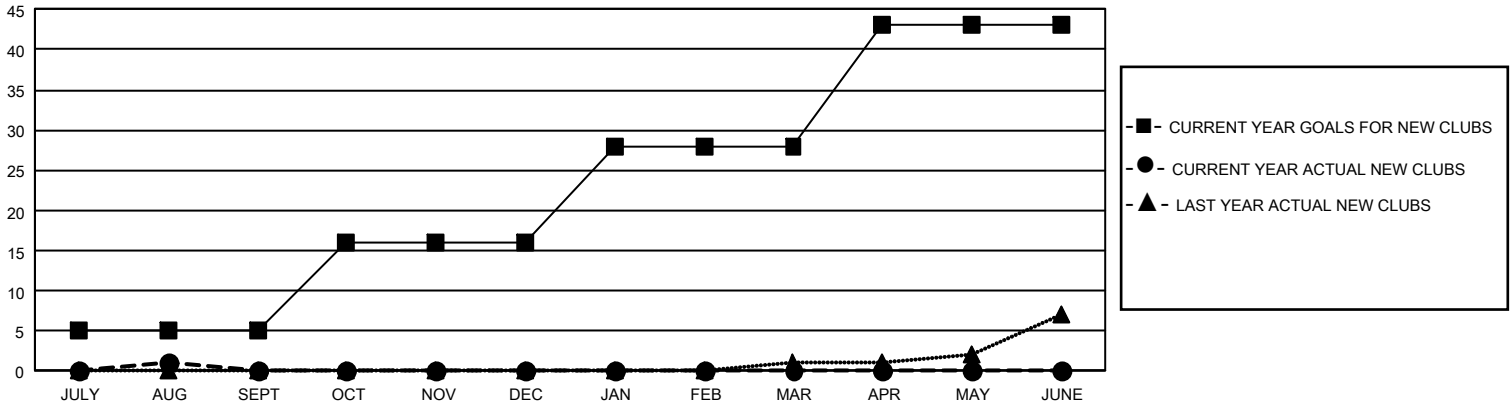
GMT Constitutional Area 1, Group C

REPORT DOES NOT INCLUDE CLUBS IN UNDISTRICTED AREAS.

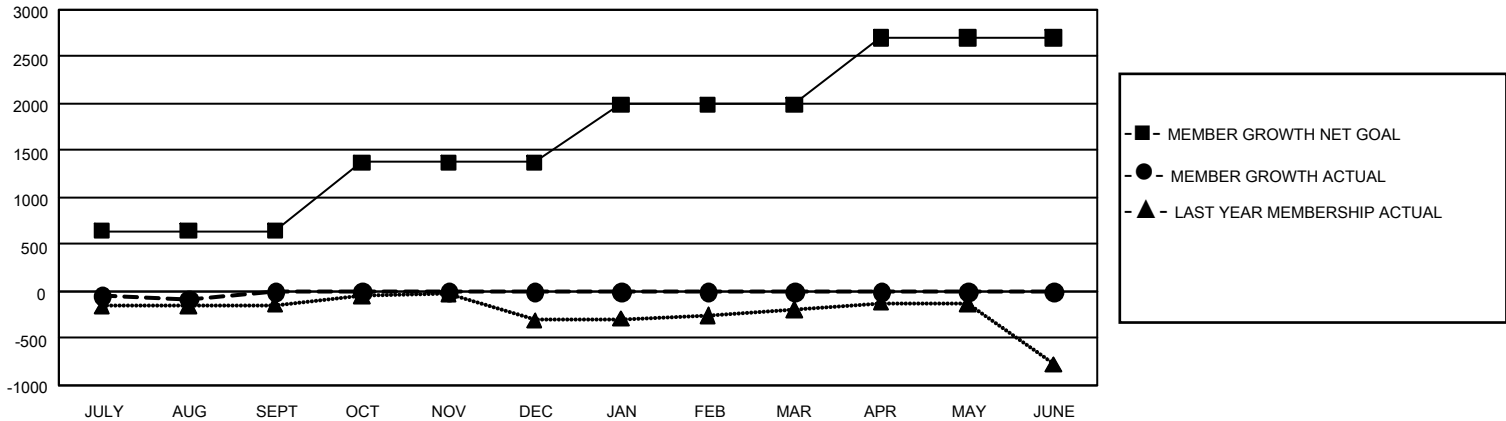
Clubs			
RESULTS FOR 2023-2024			
QUARTER	NEW CLUB GOAL	NEW CLUBS	DROPPED CLUBS
JULY/AUG/SEPT	15	1	2
OCT/NOV/DEC	33	0	0
JAN/FEB/MAR	36	0	0
APR/MAY/JUNE	45	0	0

Members			
RESULTS FOR 2023-2024			
QUARTER	MEMBER GROWTH NET GOAL	MEMBER GROWTH ACTUAL	DROPPED MEMBERS ACTUAL (including transfers)
JULY/AUG/SEPT	643	724	724
OCT/NOV/DEC	728	0	0
JAN/FEB/MAR	619	0	0
APR/MAY/JUNE	709	0	0

GOALS AND ACTUAL NEW CLUBS CUMULATIVE



GOALS AND ACTUAL MEMBERS CUMULATIVE



DROPPED CLUBS: 2 DROPPED MEMBERS DECEASED 105 CLUB CANCELLED 0 OTHER 619 TOTAL 724	314 CLUBS OF 1,400 ADDED 1 OR MORE NEW MEMBERS	GENDER DISTRIBUTION MALE 29,517 (69.25%) FEMALE 13,088 (30.71%) NON BINARY 2 (0.00%) PREFER NOT TO ANSWER 15 (0.04%)
	CLICK HERE FOR CUMULATIVE MEMBERSHIP DATA	TOTAL FAMILY UNIT MEMBERS 8,816 FAMILY MEMBERS PAYING HALF DUES 4,475